



**USB Upgrade Kit**  
**Quick Install Guide**

# Contents

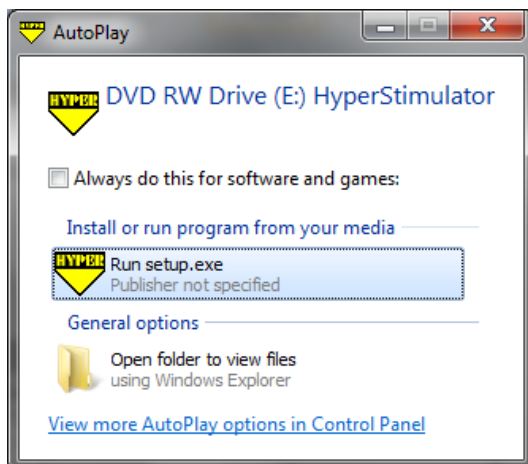
- 1 x Quick install guide
- 1 x Hyper Stimulator USB software CD
- 1 x USB module
- 4 x Mounting screws
- 1 x USB 2.0 cable

## 1. Install USB Software



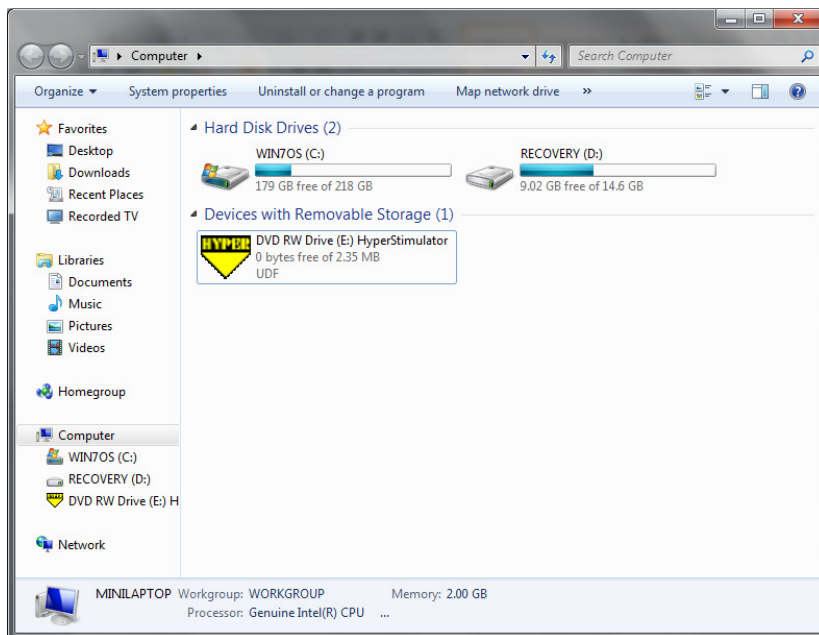
**Uninstall all Hyper Stimulator software installed on your computer first.**

**Insert the Hyper Stimulator CD into your CD drive on your computer.**



**Click Run setup.exe**

**If you do not see the above AutoPlay screen, select Windows Start Menu and select the Computer icon.**



**Double click on the Hyper Stimulator icon to start the software installation.**

**The Hyper Stimulator USB Profiler software installation wizard should start.**



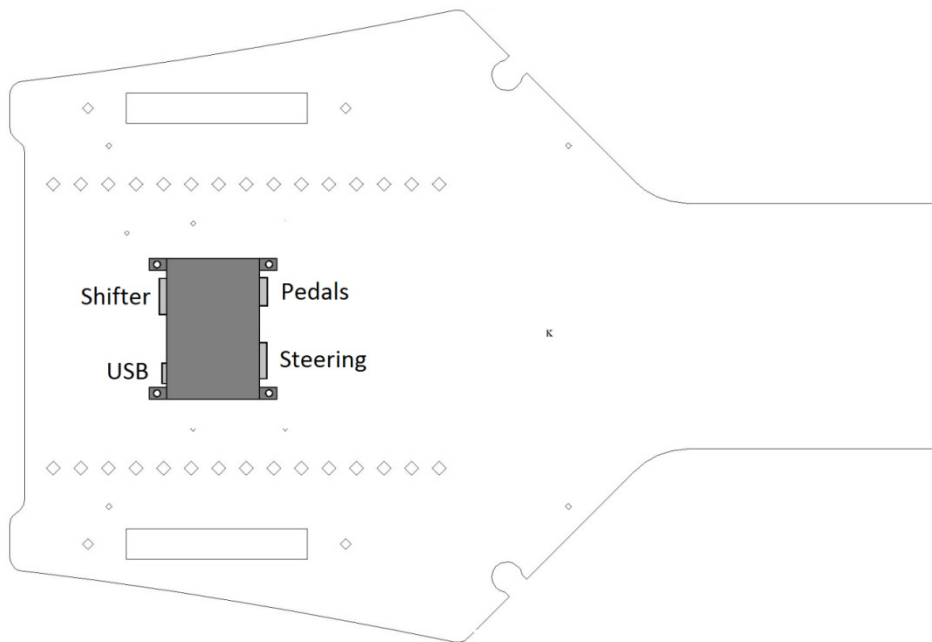
**Click Next button to start the installation process.**

## 2. Install USB Module



**Remove the existing Gameport Module from your Hyper Stimulator chassis.**

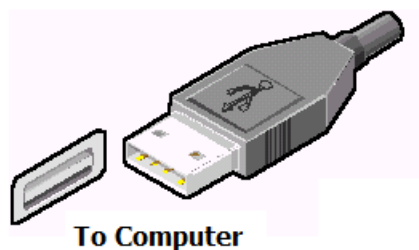
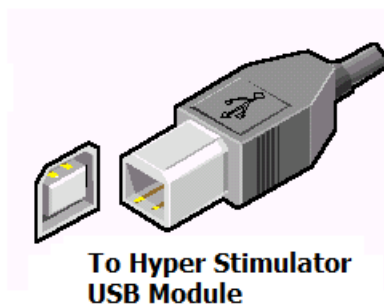
**Use the supplied screws to affix the module to your chassis. The module should be mounted approximately in the following position.**



**Ensure Steering and Pedal cables can easily be connected to the module.**

## 3. Connect USB

**Connect the supplied USB 2.0 cable to the USB module and your computer as follows.**

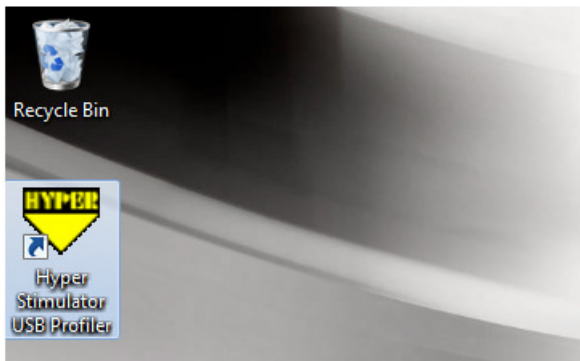


**Windows may take a few moments to detect your USB module and install drivers.**

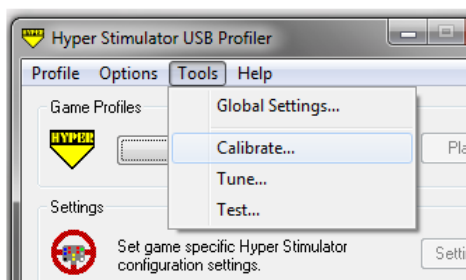
# 4. Calibrate

In order for your Hyper Stimulator to function correctly it must be calibrated.

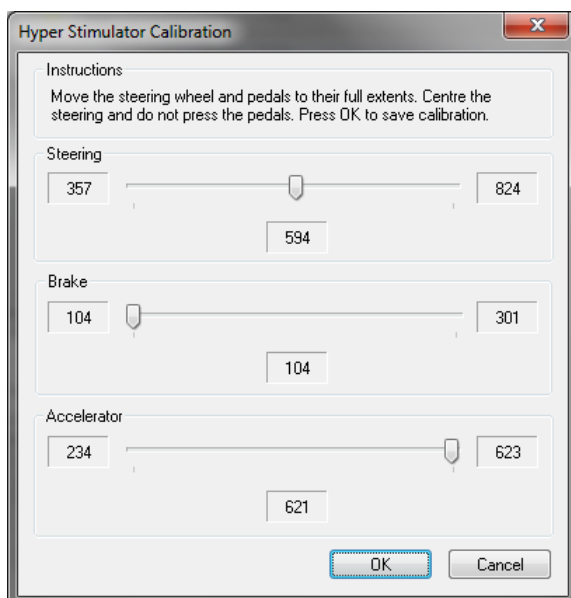
Double click on the Hyper Stimulator USB Profiler icon on your desktop.



Select the Tools menu and click Calibrate.



The Hyper Stimulator Calibration screen will be shown.

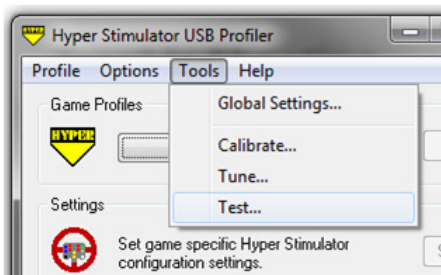


**Follow these steps to calibrate your Hyper Stimulator.**

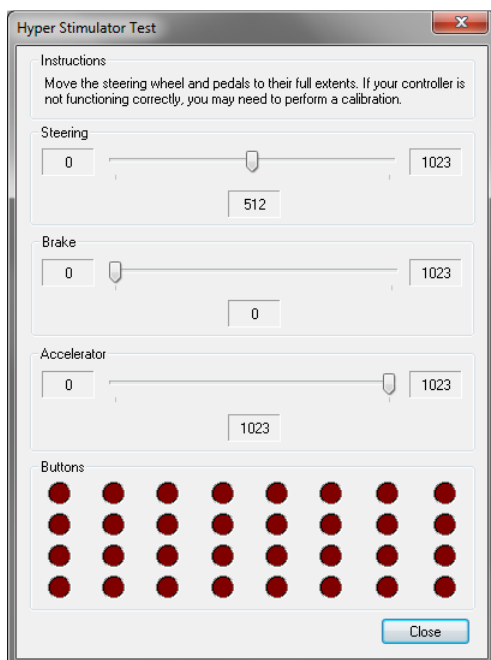
- 1. Turn the steering wheel left and right a few times, ensuring that the wheel is turned its full range.**
- 2. Press and release the accelerator pedal a few times, ensuring that it is pressed its full range.**
- 3. Press and release the brake pedal a few times. The brake is progressive. Press the brake with your foot until you have reached the maximum braking pressure desired.**
- 4. Centre the steering wheel and do not press the pedals.**
- 5. Press the OK button to complete the calibration.**

## 5. Test

**To ensure you have correctly calibrated your Hyper Stimulator select the Tools menu and click Test.**



**The Hyper Stimulator Test screen will be displayed.**



**Turn the steering wheel and press the pedals through their entire range. The steering wheel should register 0 when turned full left, 1023 when turned full right, and 512 when centred. The brake should register 0 at rest and 1023 when pressed fully. The accelerator should register 1023 at rest and 0 when pressed fully.**

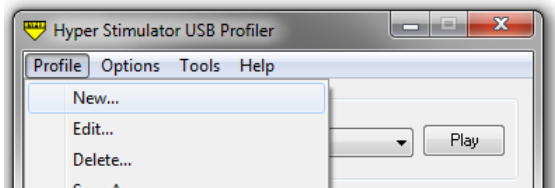
**Ensure Sequential Shifter, Gear Paddles and Programmable Buttons on the wheel register when pressed.**

**Regularly test your Hyper Stimulator. If it is not operating correctly as described above, perform a re-calibration.**

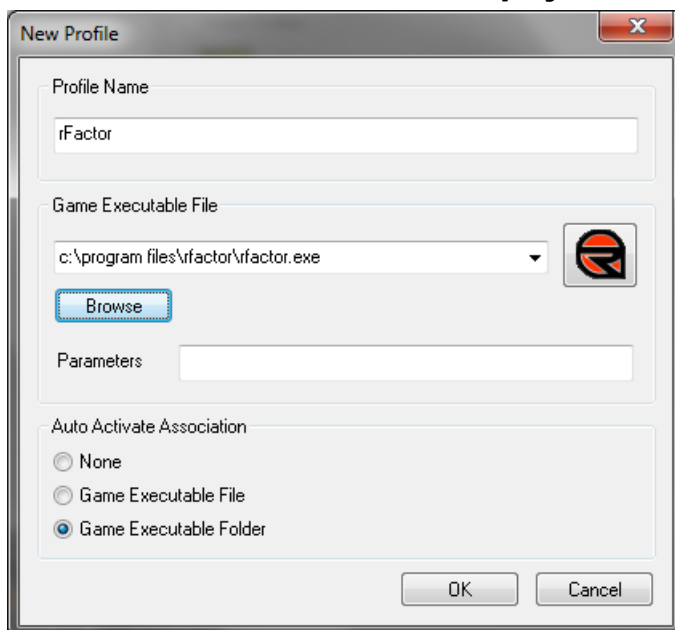
## 6. Profiles

**Game profiles allow you to associate specific settings unique to the game. This includes programming keystrokes sequences to the 12 programmable buttons on your Hyper Stimulator steering wheel.**

**To create a new Profile, select the Profile menu and click New.**



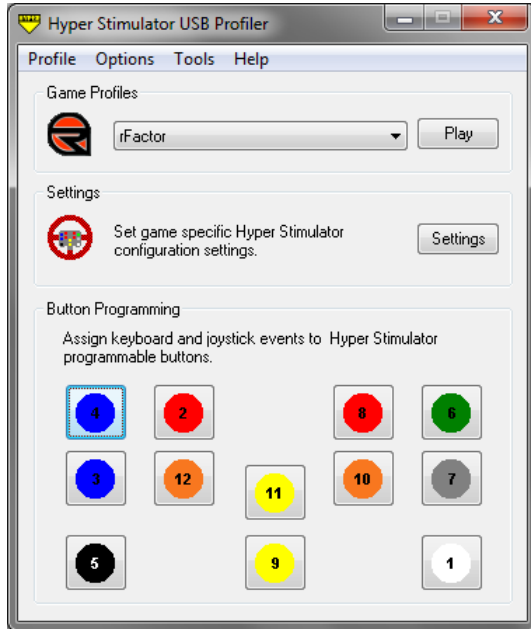
**The New Profile screen will be displayed.**



**Enter the name of the Profile and use the Browse button to locate your game executable file. Press OK to save.**

# 7. Play

Select the profile of the game you wish to play. Press the Play button to launch the game. Any game specific settings will automatically load.



# 8. Support and Software Updates

For Technical Support please email [support@hyperstimulator.com](mailto:support@hyperstimulator.com)

Latest software and guides [www.hyperstimulator.com/downloads](http://www.hyperstimulator.com/downloads)