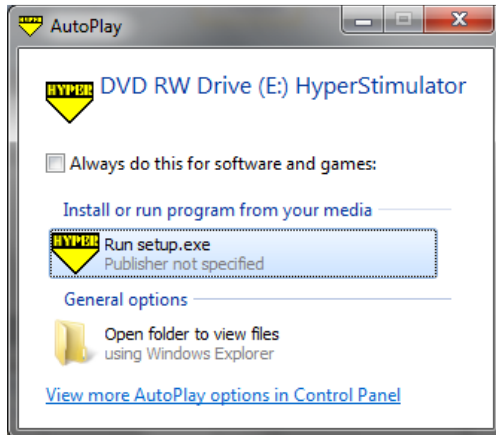




# Quick Setup Guide

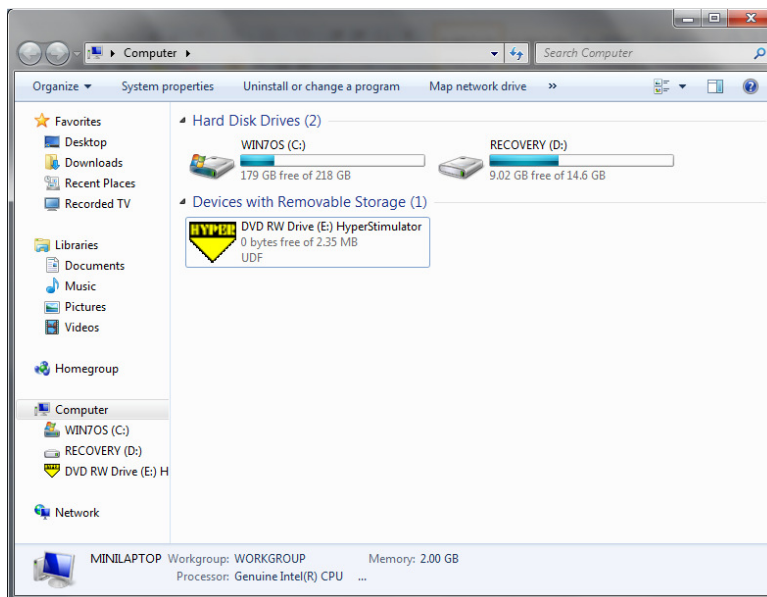
# 1. Install

**Insert the Hyper Stimulator CD into your CD drive on your computer.**



**Click Run setup.exe**

**If you do not see the above AutoPlay screen, select Windows Start Menu and select the Computer icon.**

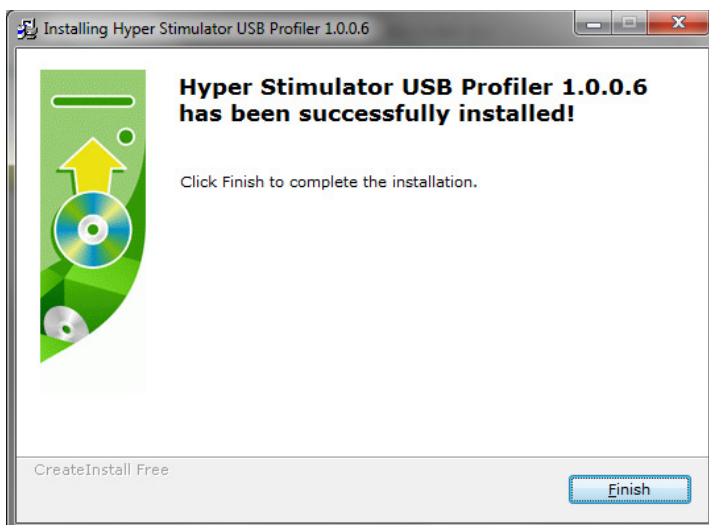


**Double click on the Hyper Stimulator icon to start the software installation.**

**The Hyper Stimulator USB Profiler software installation wizard should start.**



**Click Next button to start installation.**

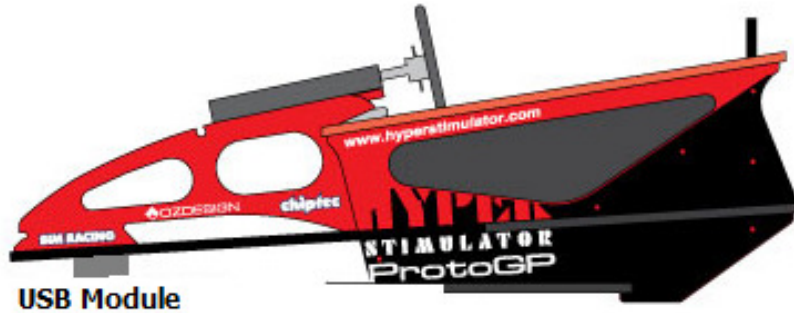


**Click the Finish button to complete the installation.**

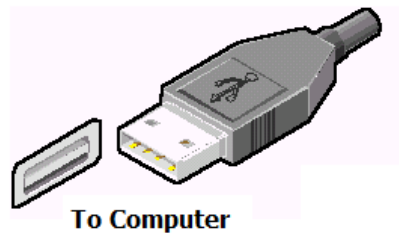
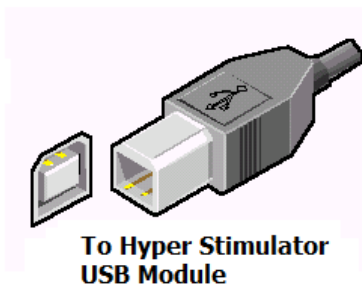
## 2. Connect USB

The Hyper Stimulator is connected to your computer using the supplied USB cable.

The Hyper Stimulator USB Module is located under the front of the chassis as follows.

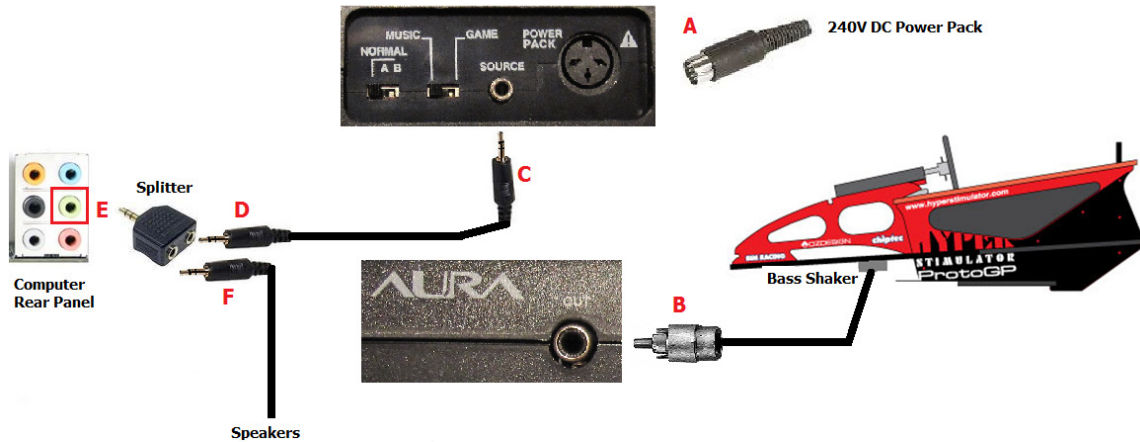


Connect the USB cable as follows.



# 3. Connect Bass Shaker

The following is an overview of how to connect the optional Aura Bass Shaker to your Computer.



**A** - Connect Aura 240V DC power pack to **POWER PACK** plug

**B** - Connect **Bass Shaker** RCA cable to Aura Amplifier **OUT** plug

**C** - Connect 3.5mm audio cable to Aura Amplifier **SOURCE** plug

**D** - Connect 3.5mm audio cable plug to audio **Splitter**

**E** - Connect **Splitter** 3.5mm audio plug to computer **Front Speaker** out (green) plug

**F** - Connect **Speakers** 3.5mm audio cable plug to audio **Splitter**

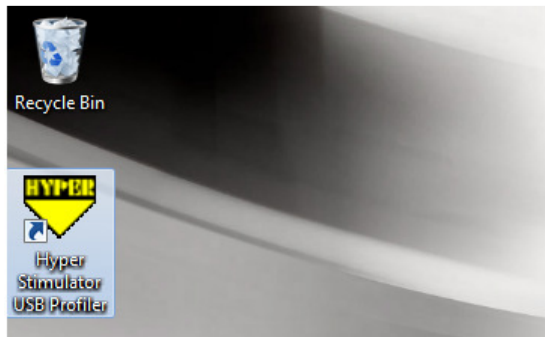
Ensure Aura Amplifier switches are set to **NORMAL** and **MUSIC** positions. These switches can be used to adjust the rumble effects.

Aura Amplifier **FILTER** and **POWER** dials can be adjusted to increase / decrease the rumble effect of the game.

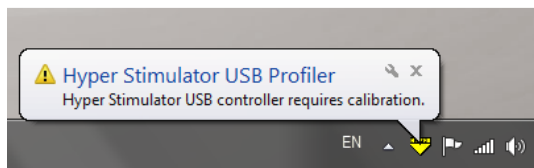
# 4. Calibrate

**In order for your Hyper Stimulator to function correctly it must be calibrated.**

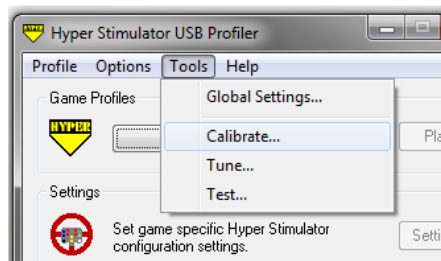
**Double click on the Hyper Stimulator USB Profiler icon on your desktop.**



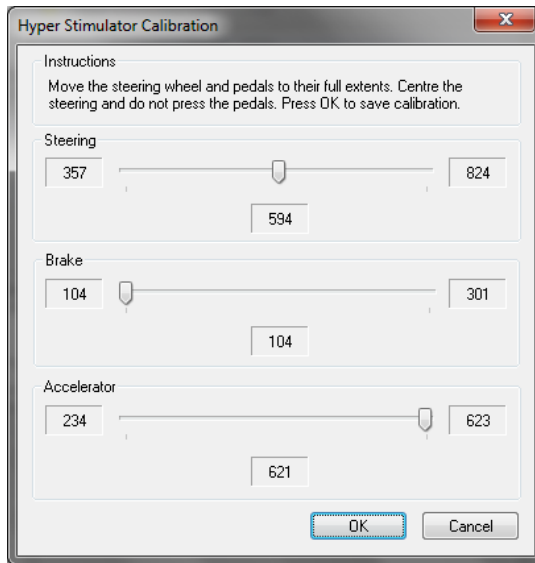
**A warning message will be displayed to remind you should calibrate your Hyper Stimulator.**



**Select the Tools menu and click Calibrate.**



**The Hyper Stimulator Calibration screen will be shown.**

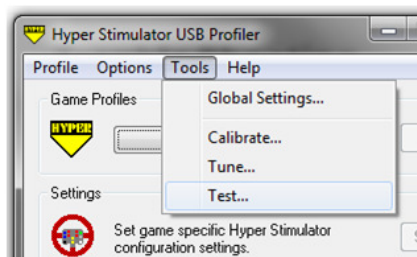


**Follow these steps to calibrate your Hyper Stimulator.**

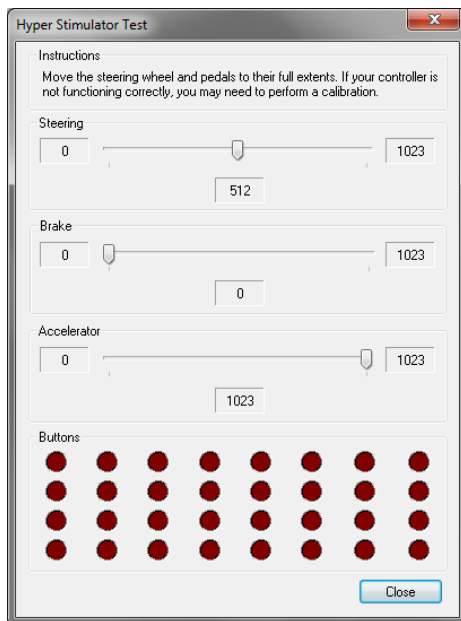
- 1. Turn the steering wheel left and right a few times, ensuring that the wheel is turned its full range.**
- 2. Press and release the accelerator pedal a few times, ensuring that it is pressed its full range.**
- 3. Press and release the brake pedal a few times. The brake is progressive. Press the brake with your foot until you have reached the maximum braking pressure desired.**
- 4. Centre the steering wheel and do not press the pedals.**
- 5. Press the OK button to complete the calibration.**

## **5. Test**

**To ensure you have correctly calibrated your Hyper Stimulator select the Tools menu and click Test.**



**The Hyper Stimulator Test screen will be displayed.**



**Turn the steering wheel and press the pedals through their entire range. The steering wheel should register 0 when turned full left, 1023 when turned full right, and 512 when centred. The brake should register 0 at rest and 1023 when pressed fully. The accelerator should register 1023 at rest and 0 when pressed fully.**

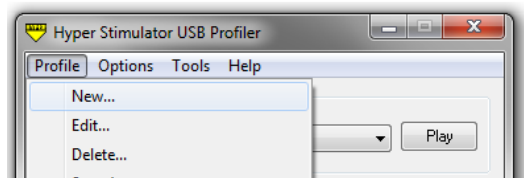
**Ensure Sequential Shifter, Gear Paddles and Programmable Buttons on the wheel register when pressed.**

**Regularly test your Hyper Stimulator. If it is not operating correctly as described above, perform a re-calibration.**

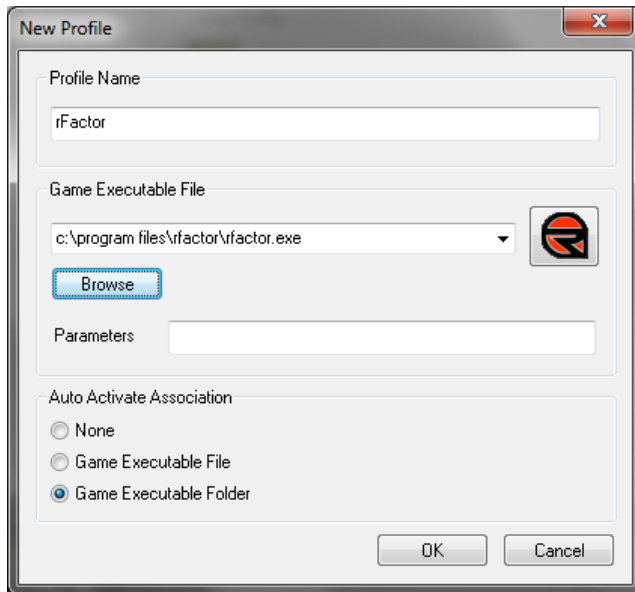
## **6. Profiles**

**Game profiles allow you to associate specific settings unique to the game. This includes programming keystrokes sequences to the 12 programmable buttons on your Hyper Stimulator steering wheel.**

**To create a new Profile, select the Profile menu and click New.**



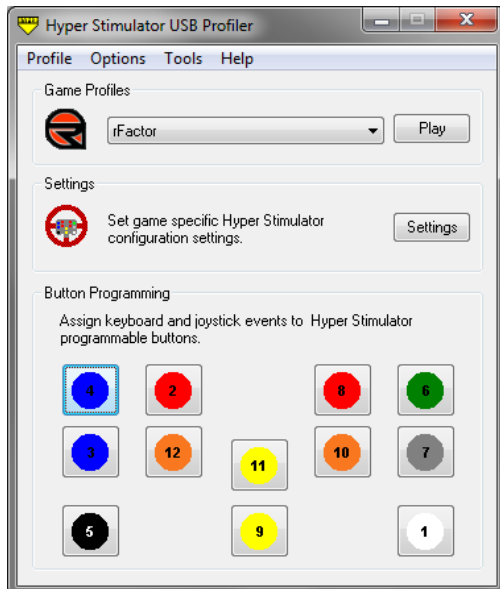
**The New Profile screen will be displayed.**



**Enter the name of the Profile and use the Browse button to locate your game executable file. Press OK to save.**

## 7. Play

**Select the profile of the game you wish to play. Press the Play button to launch the game. Any game specific settings will automatically load.**



# 8. Support

For Technical Support please email [support@hyperstimulator.com](mailto:support@hyperstimulator.com)

Latest software and setup guides can be obtained from [www.hyperstimulator.com](http://www.hyperstimulator.com)